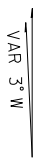
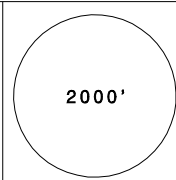
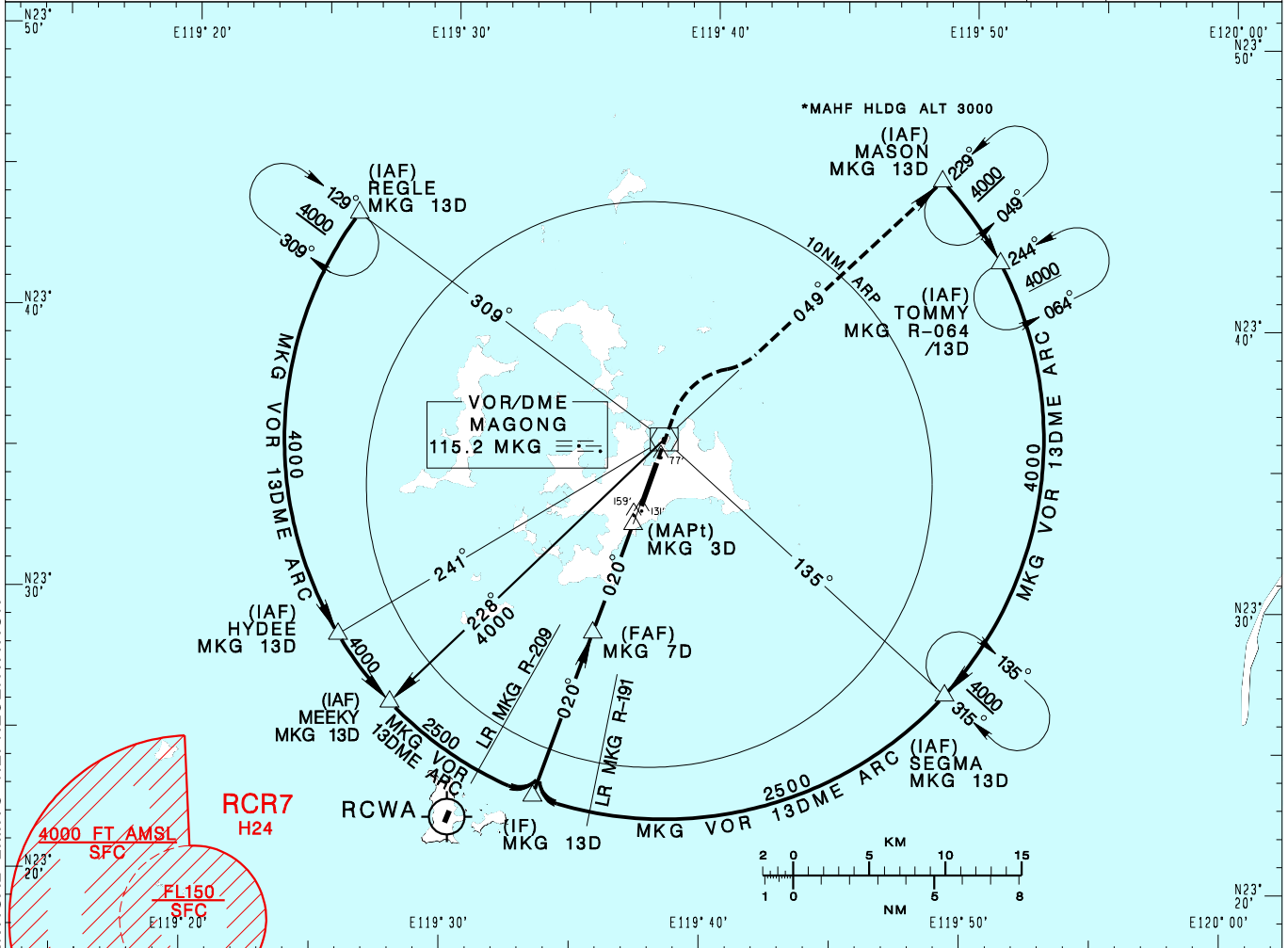


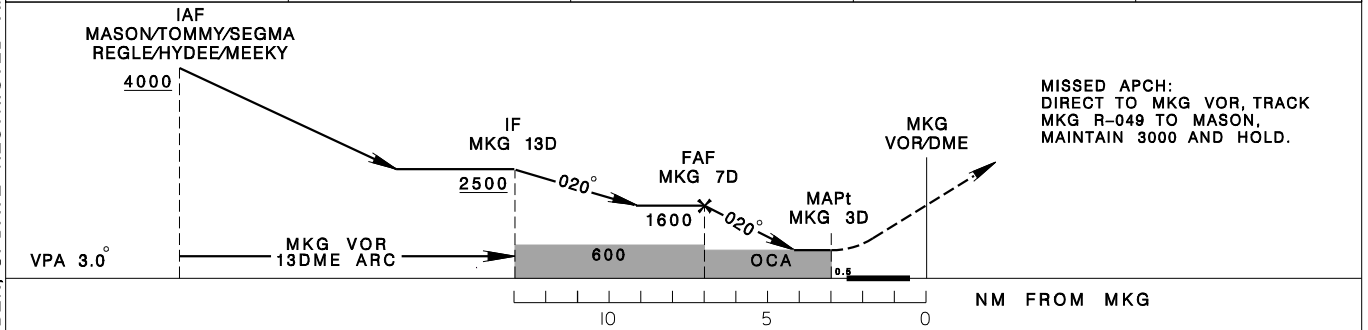
澎湖機場 PENGHU AD

RCQC
VOR RWY02

KAOHSIUNG APP 128.1 234.8	MAGONG TWR 118.3 236.6	ATIS 127.05	 		
Apt Elev: 103'		Rwy02 THR Elev: 103'		Trans Level: FL130	Trans Alt: 11,000'
BEARINGS ARE MAGNETIC; DISTANCES ARE NAUTICAL MILES; ELEVATIONS, HEIGHTS IN FEET					



7DME	6DME	5DME	4DME	DIST to MKG
1600	1280	960	640	ADVISORY ALT



MINIMA (OCA IN FT, VIS IN M, OCH IN FT)				
CATEGORY	A	B	C	D
STRAIGHT IN	540/1200 437	540/1600 437	540/1600 437	540/1600 437
APCH LGT OUT	540/1600 437	540/1600 437	540/2000 437	540/2000 437
CIRCLING	620/1900 517	620/2800 517	710/3700 607	800/4600 697

NOTE

- CIVIL AIRCRAFT USE EAST TRAFFIC PATTERN.
- DUE TO PROXIMITY OF RCR7, ARR TFC FROM SW(A1) SHALL CROSS HYDEE AT OR ABOVE FL160, PROCEED TO MKG THEN SEGMA FOR APCH, UNLESS OTHERWISE CLEARED BY ATC.
- PRIOR COORDINATION WITH ROCAF SHALL BE DONE BY ATC WHEN ISSUING CLEARANCE PENETRATING RCR7 AIRSPACE.
- CAUTION CLOSE-IN OBSTACLES (TREES, POLES & WATER TOWER):
159FT MSL, 794m & 131FT MSL, 292m SOUTH OF THR02; 77FT MSL, 436m NORTH OF THR20.

* DME REQUIRED

CHANGES: NEW PAGE NUMBER, UPDATE RESTRICTED AREA VERTICAL LIMITS REPRESENTATION